



Human User's Manual

This manual provides the operating instructions for Spectra Therapy's Wearable LASERwrap® system powered by the A10 Laser Impulse unit. The LASERwrap® contours the healing power of light onto the application area energizing the blood and lymph system which improves circulation.

This accelerates healing connective tissue, sprains and strains, wounds and bone injuries. It relieves pain, lessens muscle spasms associated with exercise and/or acute or chronic conditions such as arthritis or extremity pains.



Table of Contents

Table of Contents	2
Product Description/Registration	3
Product Introduction	4
Summary of LLLT's	5
Treatments with LASERwrap®	6
Abdominal & Back LASERwrap® Treatments	7
LASERwrap® Treatment Protocols	8
LASERwrap®/Pad or Garment Attachment	9
System Operation	10
Dual Filament & Mini Pad Applications	11
Multi Purpose LASERwrap® Applications	12
Conical LASERwrap® & U-Wrap Applications	13
Technical Info & Specifications	14
Body & Bed LASERwrap®	14
Care & Cleaning/Troubleshooting	15
Warranty	16

Spectra Therapy's *IMPULSE* Laser unit is FDA Registered.

Please read entire manual prior to use. Always seek medical advice if there is any doubt of how to use.

See WARNINGS and CONTRAINDICATIONS on page 4 of this manual.

Complete the product registration online at
<https://spectrathrapy.com/humanreg/>

Spectra Therapy, Troy, MI 48085-3157 USA, 248-524-6300

LASERwrap®, LASERpad™, LASERstrip™, and Neck LASERwrap® are trademarks and the product is patent pending property of Spectra Therapy, LLC.

©2025 Spectra Therapy LLC. All rights reserved.

HU-G10/I0-B12/2-V10 NOV 2025

Product Description/Registration

The Spectra Therapy LASERwrap® products are designed to be fully wearable portable systems providing temporary relief of pain, increase circulation and reduction of edema. This one-size-fits-all device is designed to lessen pain by using coherent laser photon energy to decrease the local viscosity of fluids which provide therapeutic effect. It is important to emphasize that therapy with the Spectra Therapy LASERwrap® does not exclude other conventional medical treatment. Effectiveness of this treatment is dependent upon correct use. There are no known side effects from this therapy. If treatment times are exceeded, the therapy may not provide more positive results.

BENEFITS: Programmable and wearable LLLT treatments make it practical to turn temporary pain relief and temporary improvement of circulation into consistent pain relief and continual stimulation of the circulatory system. Spectra Therapy's LASERwrap® make treatment easy throughout the day and night.

- Treatment with the Spectra Therapy's LLLT can be combined with treatment via conventional medicine.
- Repetitive treatment times of 7 or more minutes are most effective. The interval time between treatments is important as it allows time for the body's own lymph system to activate and cleanse the area.
- Most patients should expect to feel pain relief and/or muscle relaxation after 2-3 days of Spectra Therapy LLLT treatment.
- Some patients may feel a noticeable reduction of pain immediately after their first treatment and relaxation of stiff muscles after one day of treatment.

Fully Portable, Battery Powered - The Spectra Therapy LASERwrap® is a truly portable laser unit that does not confine you to cords or stationary lamp type holders for use.

To register your unit online go to SpectraTherapy.com. Enter the requested data and click "submit". Verify your registration by double clicking the registration link that will be in your inbox.

Product Introduction

The Spectra Therapy LASERwrap® system contains lasers. Prior to operating this apparatus, it is recommended that you read this manual thoroughly, including all instructions and cautions, and adhere to important safety precautions:

- Laser beams can cause optical damage. Do not irradiate eyes directly.
- The apparatus should be placed beyond the reach of children to prevent optical damage. The therapy apparatus is not recommended for children.

WARNINGS: Reasonable dietary structure, sufficient nutrition and proper physical exercise can improve the metabolism and promote the treatment effect.

- It is not advisable to privately reduce the medicine dosage or stop administering medicine while using the therapy apparatus.
- Only when the related symptoms improve remarkably can the patient change the medicine dosage as directed by a doctor.

WRONG SETTING WARNING: Each patient may react differently to various settings. Refer to contraindications. If there are no known adverse effects, continue to use settings as provided, one may increase or decrease unless advised by a doctor to the contrary.

CONTRAINDICATIONS: This therapy apparatus is contraindicated in pregnancy and patients with cancer or internal hemorrhaging.

Disclaimer - The information is not intended to replace a one-on-one relationship with a qualified doctor. It is intended as a sharing knowledge and information from the research and experience of Spectra Therapy, LLC and requires you to make your own decisions regarding your health based upon your own research and in partnership with your doctor. The Spectra Therapy LASERwrap® offers the user a simple means to determine the type of pain encountered and identify an area where improved circulation is desired. After reviewing the instructions, the user may promptly try the therapy.

Summary of LLLT's

The therapy is light energy absorbed into the patient's tissue which triggers biological changes at a cellular level to provide topical healing for the temporary increase in local blood circulation; temporary relief of minor muscle and joint aches, pains and stiffness; relaxation of muscles and relief of muscle spasms; as well as temporary relief of minor pain and stiffness associated with arthritis. The dose and frequency of treatment can be adjusted to produce the desired effect by selecting a treatment guideline.

The Physiological Effects of LLLT are:

1. Bio-stimulation
2. Improved blood circulation and vasodilation
3. Reduces or eliminates pain
4. Anti-inflammatory and anti-edematous effects
5. Promotes wound healing
6. Temporarily promotes reduction of muscle spasms
 - May relieve certain acute and chronic pains
 - Increases blood flow circulation
 - Helps generate new and healthy cells and tissue
 - Promotes faster wound healing and clot formation
 - Promotes increase athletic performance

The LASERwrap™ product line is unique as unlike other lasers that treat only a point of interest per single application, per attendant, Spectra treats the entire surrounding area repetitively and unattended. LASERwrap™, via the automatic cycles, repeatedly improves the transfer of liquid in and out of the body's cells, helping them to absorb oxygen and flush the lactic acid and other inflammatory enzymes. When wrapped around an extremity a wearable chamber is created: similar to a baby incubator treating soft tissues, bones, arteries, veins and meridians.

Absolutely nothing delivers results like LASERwrap® 8 or 12 hours on a charge - only 2.5-3.5 hours to Recharge. - All wraps and garments made with dual filament. LASERwrap® are machine washable polyester fabric that should be applied directly on the body so that coherent laser energy can be absorbed. Since the wraps are not sterile, gauze should be used for all open wounds, then apply the wraps over the gauze.

5

Treatments with LASERwrap®



U-Wrap

Dual Filament

Conical

Vest



KNEE/CALF



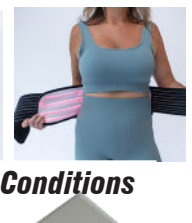
SHOULDER



ELBOW



BELT/ABDOMEN/WAIST



Simple Solution for Multiple Conditions



2.5-3.5 hours to charge

QUICK & SIMPLE

Treat the entire extremity or body at once.
Hands Free & Automatically. Coherent Laser.
Nothing delivers results like LASERwrap®

- 8-10 hours on a charge
 - 2.5-3.5 hours to recharge
- Improves both macro and micro circulation

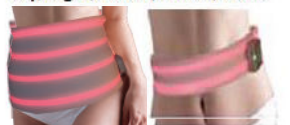
6

Abdominal & Back LASERwrap® Treatments

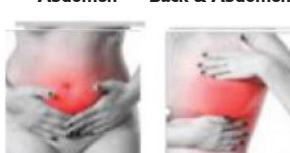
Improve Comfort



Week 1 Week 3
3 - 3 joule Auto Treatments/Hr.
Day/Night/Travel /Home /Work



Abdomen Back & Abdomen



Abdominal Pains Breast



LASERwrap® improves circulation for healing and reduces soreness related to muscle spasms, stress, tension and gas issues; relieves skeletal-muscular arthritic PAIN. Circulation improvements using LASERwrap®'s VIOLET mode helps firm up stretched skin tissues caused during pregnancy, recovering quickly from tummy tucks or hernia surgeries.

I used the laser 2-3 times a day for about 30 min -to hour the first 3 weeks after labor, and twice a day for 30 minutes after 3 weeks. I could tell a HUGE difference in my body as you can see in the pictures. Let me add, I have done NO diets or exercises after I had my baby. I do believe GREEN LASERwrap® mode made me heal much faster than normal! My postpartum bleeding was only half the time they estimated from the hospital. My hemorrhoids shrunk quickly and they are hardly even noticeable and never hurt. I also tore from my delivery and had to get stitches, which healed much quicker than they told me they would and I was never sore from them. I also used LASERwrap® on my back because I got so sore from the epidural and it eased the pain instantly when I used it. I would definitely recommend any postpartum mommy to use LASERwrap® to heal faster and to reduce soreness after childbirth! I truly believe it was what helped me bounce back to myself.

Sarah Lee - Elkton, FL

7

LASERwrap® Treatment Protocols



Rehabilitation on the Go

Training

- Conditioning
- Pre-event
- Post-event

Acute Conditions

- Injuries
- Wounds
- Post-Op

Chronic Conditions

- Arthritis
- Joint Disease
- Autoimmune
- Neuromuscular
- And More...

Repeat LASER Treatments Makes the Difference
WEARABLE Makes it Practical

Automatic Hands Free LASER Therapy

3 treatments/hour Daytime - 2 treatments/hour all night

POWER TO PERFORM & RECOVER

Multi disciplinary - Mobility
Pre-conditions muscles-reduce joint pain
It conditions waste in the body. Recharge System
1 Hr. (3-10 min. treatments) + Overnight

Speed Recover-Lessen Pain

Aids in closure, mending & less infection
Reduces scar tissue formation in tendons and ligaments

Daily 1 Hr.-3 x a Day

OR 12 Hrs. nightly for 1 Week

Reduce Pain-Muscle & Joint,

Spasms/Stress

Improves overall energy & temperament

Daily 1 Hr.- 3 x a Day

OR 12 Hrs. 2-6 Weeks



\$\$\$ What Counts?

- A Strike OUT
 - Days in Recovery
- Invest Wisely

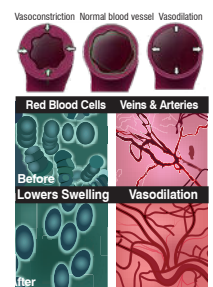
Vasodilation Vascular, Orthopedic, Metabolic, Excretory

Why it works! ENERGIZES BLOOD

Laser photons apply a charge to the blood cells causing cells to repel one another, decreasing the viscosity of the blood, allowing more oxygen and lymph by widening blood vessels.

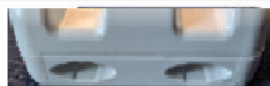
- Increase Circulation Blood flow
- Increase Lymph Flow Transport waste
- Increase Oxygen Flow Muscle energy
- Flush Lactic Acid Replenish with protein
- Energy Activation of ATP by Mitochondria

A study by Detroit Medical Center showed 10.7 % increase of oxygenation of the treated area. Repeat treatments make the difference. Wearable makes it practical.



8

LASERwrap® /Pad or Garmet Attachment



The Spectra Therapy *IMPULSE* Laser unit, model A-10 is designed to have laser filaments inserted into the slots on the front of the unit.

FDA Registered • Class 1M Laser Light • 3 joules of energy/treatment

Press once
turn **ON**
Press and hold to
turn **OFF**



<Slide filament into unit until snug then increase force last 1/4"
<Charge Connector 3-4 hours to recharge
Indicator Light ● ● ● ● ●
After pressing once to turn **ON**
Press at one second intervals until light shows desired Color Mode.
Flashing Red indicates Charging Mode turns solid **Red when fully charged.**

THERAPEUTIC / WOUND HEALING / CIRCULATION

BLUE Mode

On- 12.5 min.
Off- 20 min.
Battery Life- 12 hrs.

2 Treatments/Hour

1. Use for Chronic conditions treat all day.
(Minimum of 3 Days, until the wound closes or inflammation clears)
2. For maintenance prevention & performance enhancement.

Leave on all Night

GREEN Mode

On- 10 min.
Off- 10 min.
Battery Life- 8 hrs.

3 Treatments/Hour

- Quick Response/High Intensity**
1. Apply 2-3 x's a Day for 2hr.
(Minimum of 3 Days, then reduce to 1-2 x's daily as needed)
- Pre-Post Event Treatments**
2. Apply 1-2 hr., before & after
- Acute: Use Daily for 1 week**
Chronic: 2-3 days per week

FAT REDUCTION / ENERGIZE

VIOLET Mode

On- 10 min.
Off- 10 min.
Battery Life- 8 hrs.

3 Treatments/Hour

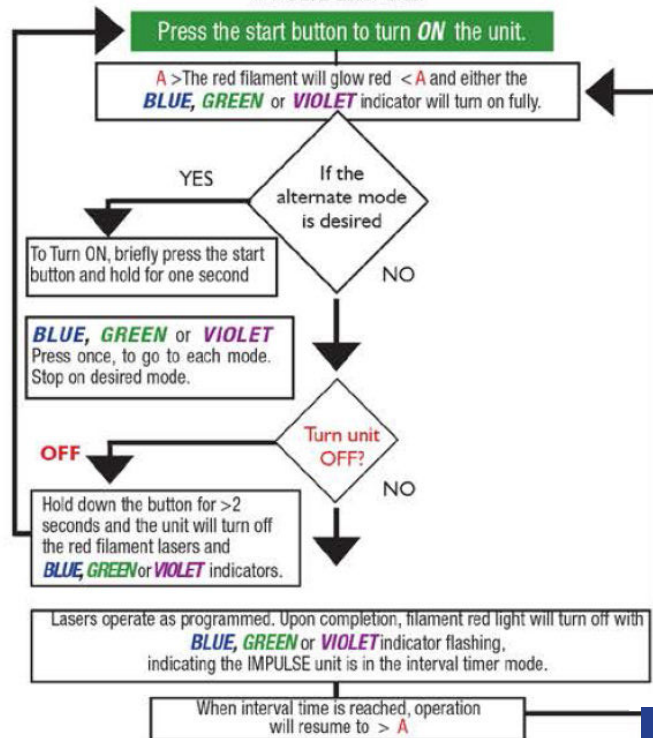
- Sliming/Contour/Equine**
1. Apply for 2 hr.
 2. Exercise for minimum of 30 minutes
 3. Add additional hrs. of treatments as needed.
 4. Continue Daily for 1-2 weeks

9

System Operation

To improve circulation and receive temporary pain relief position and secure a filament wrap or pad onto the point of interest.

Next, connect the filament[s] to the Spectra Therapy LASERwrap® *IMPULSE* Laser unit.



10

Dual Filament & Mini Pad Applications

Reduce inflammation quickly, simply, apply under garments to smooth strains and sprains. Helps healing accelerate while minimizing pain and recovery time dramatically. The alfalfa head wrap technique has been around for a century now for helping reduce tooth ache pain. With LASERwrap's coherent laser energy, it not only reduces pain but the extraction sites shrink to pin holes with in a few day. – it simply works! QUICK.

Simple Solution - Wrap AROUND Multiple Applications
Discover the Dual Filament



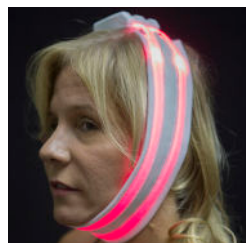
24" Dual Filament Hand



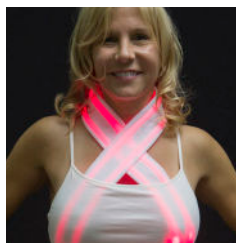
24" Dual Filament Wrist



24" Dual Filament Shoulder



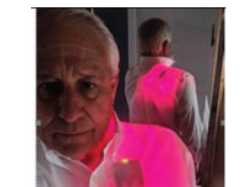
24" Dual Filament Tooth



24" DF Neck & 40" DF Chest



40" Dual Filament Foot



7"x14" LASERpad Shoulder



7"x12" LASERpad Abdominal

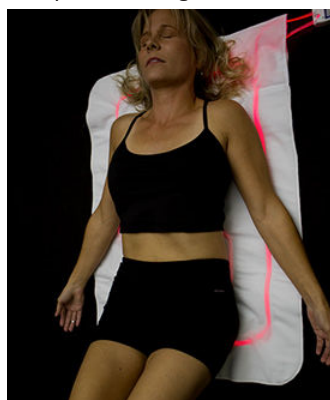


24" Dual Filament Waist

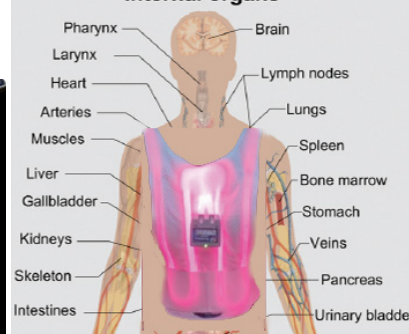
11

Breathe Easier with Wearable LASERwrap®

Laser therapy is proven to improve blood and lymph flow increasing oxygen level while decreasing mucus to improve breathing.



Internal organs



Slip LASERwrap® Vest over head, then secure vest around abdomen with elastic straps provided. Then slip T-shirt (preferably with 5% spandex) over vest to keep vest close to body both front and back.

****The LASERWRAP® does not treat pneumonia on its own. Always refer to your personal physician for proper treatment.**

The body's efforts to fight viruses can cause inflammation on lungs, making breathing difficult. Blood vessels damaged in the war between the virus and immune system may begin to leak fluid into lung tissues that become visible as white on spots on chest x-rays. The fluid may drown some of the tiny air sacs preventing them from delivering oxygen to the blood and removing carbon dioxide. This type of inflammation is pneumonia.

Repeated LASER treatments effectively reduce pulmonary inflammation, helping seniors as well as athletes reduce coughs and muscle spasm pain using vasodilation. Test case measure increased blood oxygen levels up 2-4 points after a couple nights of sleeping with LASERwrap® based on severity of their condition. We have found the LASERwrap® vest is more effective with patients reacting quicker since it treats the front and back sides of a majority of their organs simultaneously.

WEARABLE LASERwrap® provides automated laser treatments that are effective & practical providing quick symptom relief...

12

Conical LASERwrap® & U-Wrap Applications

Treating around extremities with the wraps below, vasodilates the vascular system (as well as abdominal digestive-metabolic and disposal systems when area is treated), Improves circulation of blood, lymph and oxygen delivering cellular energy to area of concern. Automatic repeated treatments are delivered 2 or 3 times per hour for up to 8-12 hours, day and or night. This type of treatment is similar to that delivered to babies for 48-72 hours after childbirth when their metabolic system does not activate immediately when born. The entire baby is placed in a light incubator. Repeated treatments are delivered over a continuous period making this therapy most effective and safe. LASERwrap® technology now makes this therapy available while traveling, at home or at work. No need to travel to clinics for treatments, to get the joules of coherent laser energy needed to treat your problems. In addition, it is machine washable. So one can wear at after sports and get sweated up, wash and be fresh to use in bed.



U-Wrap 14.5" or 17.5"



Calf U-Wrap



Neck/Shoulder U-Wrap



Abdominal 24"x9" Conical



Impulse Laser Unit



Thigh 24"x9" Conical



Neuropathy - Sprains
12"x25" Conical



Neck-24"x9" Conical
Slip In Pillow Case



Back - 24"x9"
Conical

13

Care & Cleaning

- No maintenance is required on the Spectra Therapy IMPULSE Laser unit other than keeping the product clean and stored in the proper environment. The user should ensure that all components are dry prior to use. Do not expose the unit to extreme temperatures, humidity or direct sunlight in an enclosed area. Do not allow the emitter or the connecting port for the power adaptor to become wet. If the emitter or connecting port does become wet, please contact the manufacturer, Spectra Therapy at 248-524-6300, prior to continuing use.
- To clean the body of the laser unit, unplug the unit from the power adaptor and use only a soft dry cloth. Wipe the body with an alcohol swab or cotton moistened with 70% isopropyl alcohol. Never use an abrasive cleanser or submerge the laser unit in water or any other liquid.
- To clean the wraps and pads; hand or machine wash separately in warm or cool water with mild detergent. Rinse thoroughly and hang or lay flat to dry.
- All repair and/or service to the Spectra Therapy IMPULSE Laser unit must be done by the manufacturer. Any opening or disassembly of the unit immediately voids the warranty.
- Contact Spectra Therapy with any questions at service@spectrathrapy.com or call us at 248-524-6300.

Troubleshooting

If the Spectra Therapy LLLT is operating properly, the patient may or may not feel a gentle warming of the skin surface in the area when receiving treatment.

- The GREEN and BLUE indicator LEDs will be lit depending which mode is running in standby, RED LED will flash if battery condition is low and will be fully lit if connected to a power source.
- The model A-10 unit has 2 lasers. Do not look directly at the emitter openings even though the reflected light has less than 5 mw/cm² (Laser Class I rated).
- Device failure - If the Spectra Therapy model A-10 emitter will not turn on, or fails during treatment, first plug the unit into a charger using the USB Cable to recharge the battery. If the emitter does not shut off at the end of the treatment session, the user should position the unit so that the emitter cannot cause vision irritation. The typical battery life is one year and battery replacement may be required.

Contact Spectra Therapy for further instruction 248-524-6300.

15

Technical Info & Specifications

IMPULSE Laser Unit (Model A-10)

Average Power: 2 - 200 mw laser

Measures: .8 MW/CM² 10 CM from surface

Wavelength of: 660nm

Power Source: Medical Grade Switching Power

Adaptor (supplied) Input: 100-204 V 50/60 Hz, 0.55-03A Output: 5V max. 0.5A

Class II Equipment Applied Part Type: Laser Class IM (I 60825-1)

Supply Ratings: 5 VDC; max. 0.5A Mode of Operation: Continuous Operation
Inherent safe unit being battery operated. Supply ratings apply to charging of unit.

Operating Temperature for Charging: 0°C to 45°C or 32°F to 113°F
Do not charge units in environments below freezing and above 45°C or 113°F

Operating & Storage Environment: -10°C to 50°C or 14°F to 125°F
Use of device in colder temperatures may result in decreased battery life. As with other electronic devices, do not leave unit exposed to direct sunlight.

Humidity: 15-95% RH **Weight:** 2 oz./57g

Dimensions: 2.55" W x 2.17" L x .874" D [55W x 6.5 L x 21.5 D] cm

Body & Bed LASERwrap®



Position pad flat on top of sheet or insert pad between white sheet and mattress pad.

Bed LASERwrap™
20"x36"



Improve upper body circulation. Use for conditions of upper/lower neck and shoulder pains. For secure fit, straps are positioned under arms.



Reduces Neck, Tooth, TMD/TMJ & Head Pains
Multipurpose 14" x 20" pad
Used for wheel chairs, while on sofa or bed. Insert pad under a white pillow case & lay on or hug to treat abdomen

14

Warranty

Spectra Therapy, LLC, hereinafter called the Company, guarantees that the Spectra Therapy IMPULSE Laser unit will operate in the manner described in this manual for a period of 12 months from the date of purchase, when used and maintained in accordance with the instructions herein. Defects or damage to the laser unit due to misuse or abuse are not covered by this warranty. Please have this warranty information available, along with the date of purchase. Wraps and pads, which are consumables, are excluded from the 12 month warranty. The Company shall not be liable in any manner in respect to bodily injury and/or property damage arising from the use of the Spectra Therapy LLLT, where such use is not in strict compliance with the instructions and safety precautions contained in the Spectra Therapy LLLT User's Manual, including all supplements thereto, in all product labels, and according to the terms of warranty and safety of this equipment, nor if any changes unauthorized by the Company are made to the Spectra Therapy LLLT. This warranty does not cover any malfunction or failure of the product caused by product misuse, including, but not limited to, dropping the unit, using chargers or power cords not provided by Spectra and failure to provide reasonable and necessary maintenance or any use that is inconsistent with the user's manual.

- Replacement parts or labor furnished by anyone other than the Company, the selling dealer or a certified Company service technician voids warranty.
 - Defects or damage caused by labor furnished by someone other than Company, the selling dealer or a certified Company service technician voids warranty. Company shall not be liable in any event for incidental or consequential damages. Some states do not allow the exclusion or limitation of incidental or consequential damages, so the above limitation or exclusion may not apply to you. To obtain service from Company or the selling dealer under this warranty:
1. A written claim must be made within the warranty period to the Company or the selling dealer. Written claims made to the Company should be sent to: service@spectrathrapy.com or call 248-524-6300 to receive an RMA prior to returning units.
 2. The product must be returned to the company directly by the owner to an address provided at time of issuing the RMA. This warranty gives you specific legal rights and you may also have other rights, which vary from state to state or location to location. The Company does not authorize any person or representative to create for it any other obligation or liability in connection with the sale of the Product. Any representation or agreement not contained in the warranty shall be void.
 3. Extended warranty and product protection plans are available for purchase directly from Spectra Therapy.

HU-G10/I0-B12/2-V10 NOV 2025

16